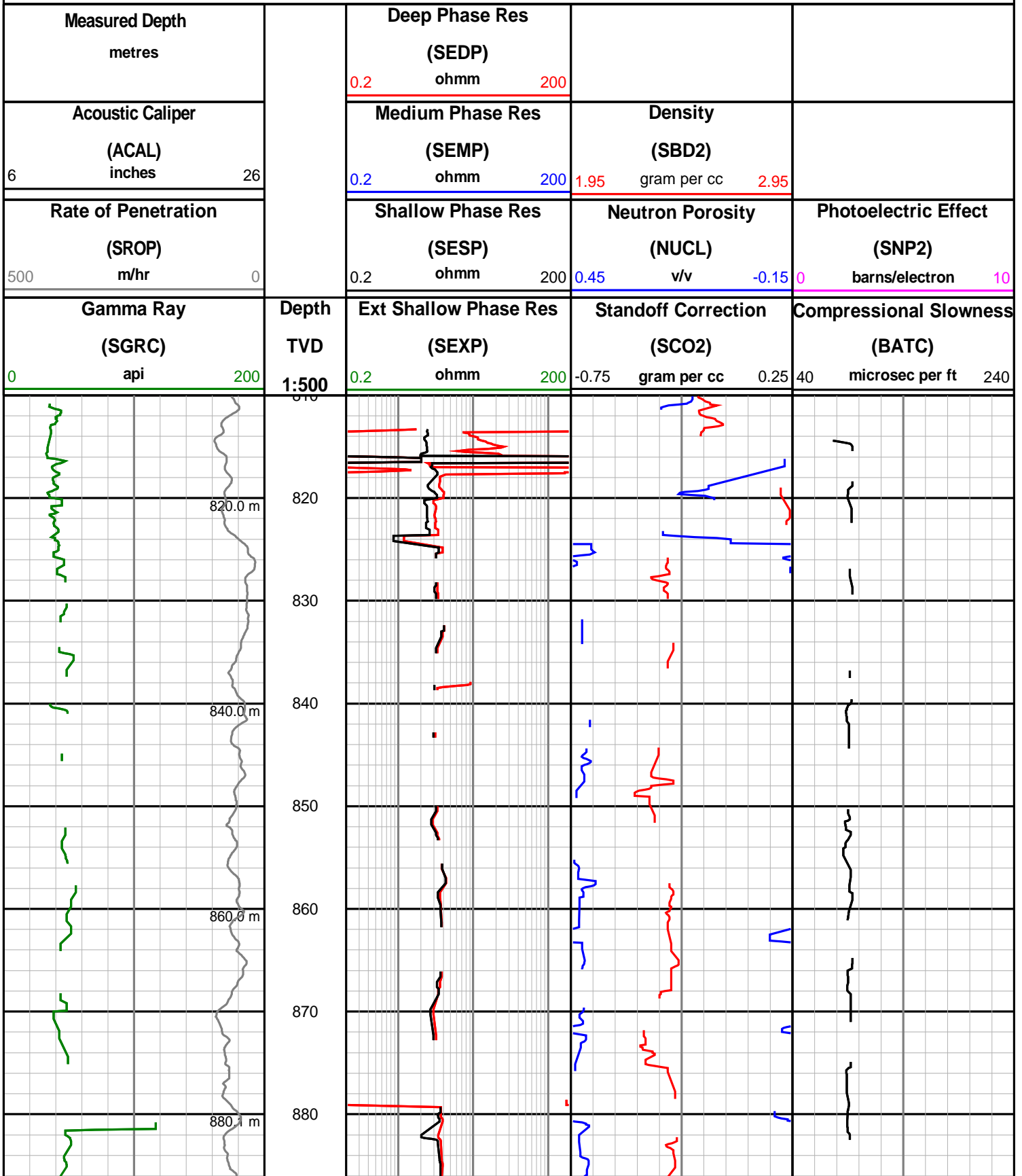
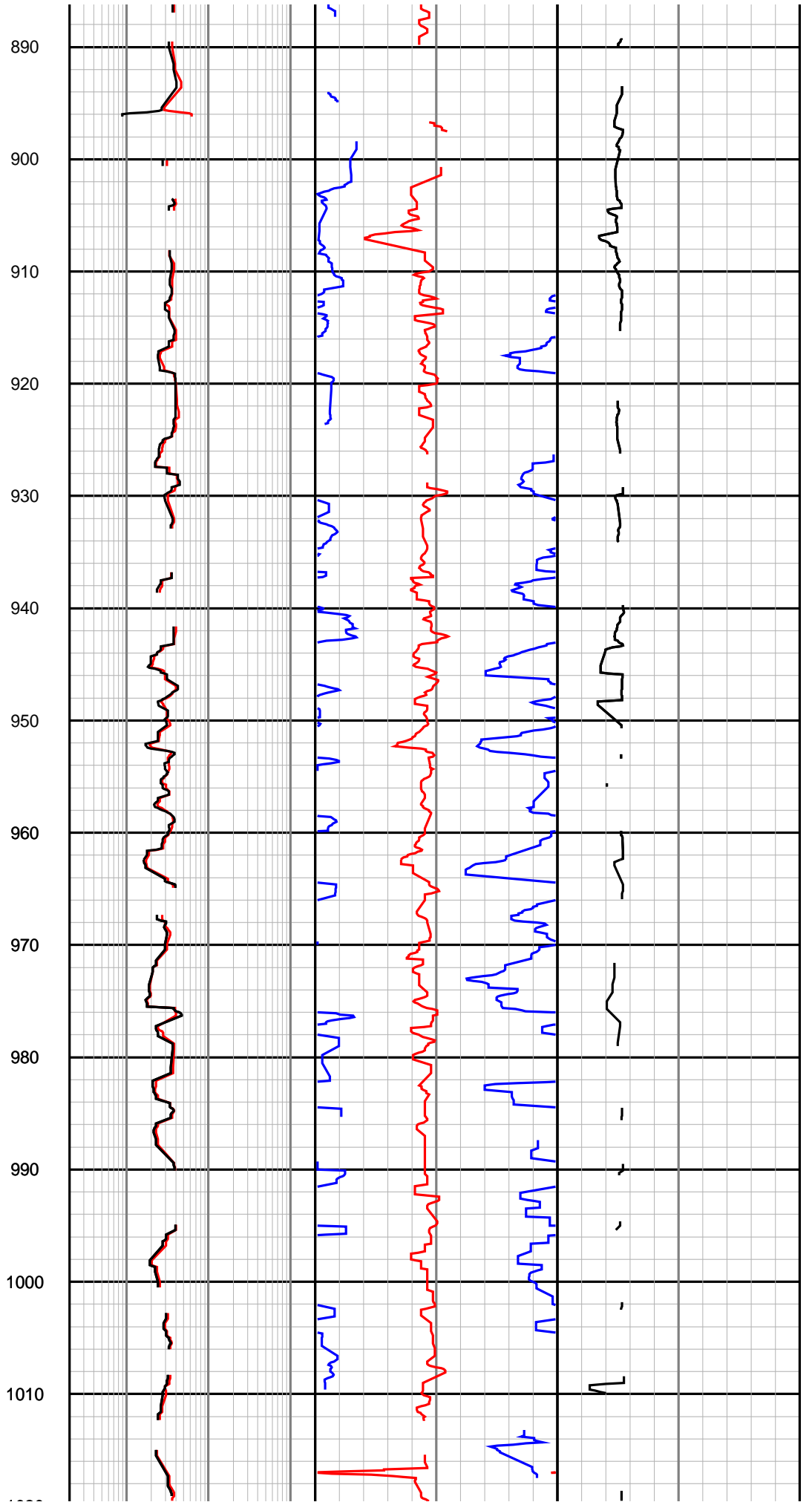
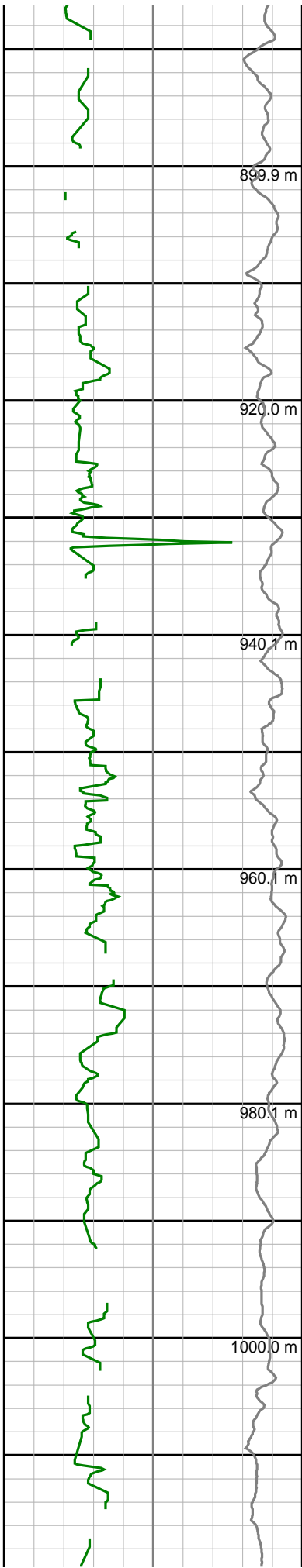
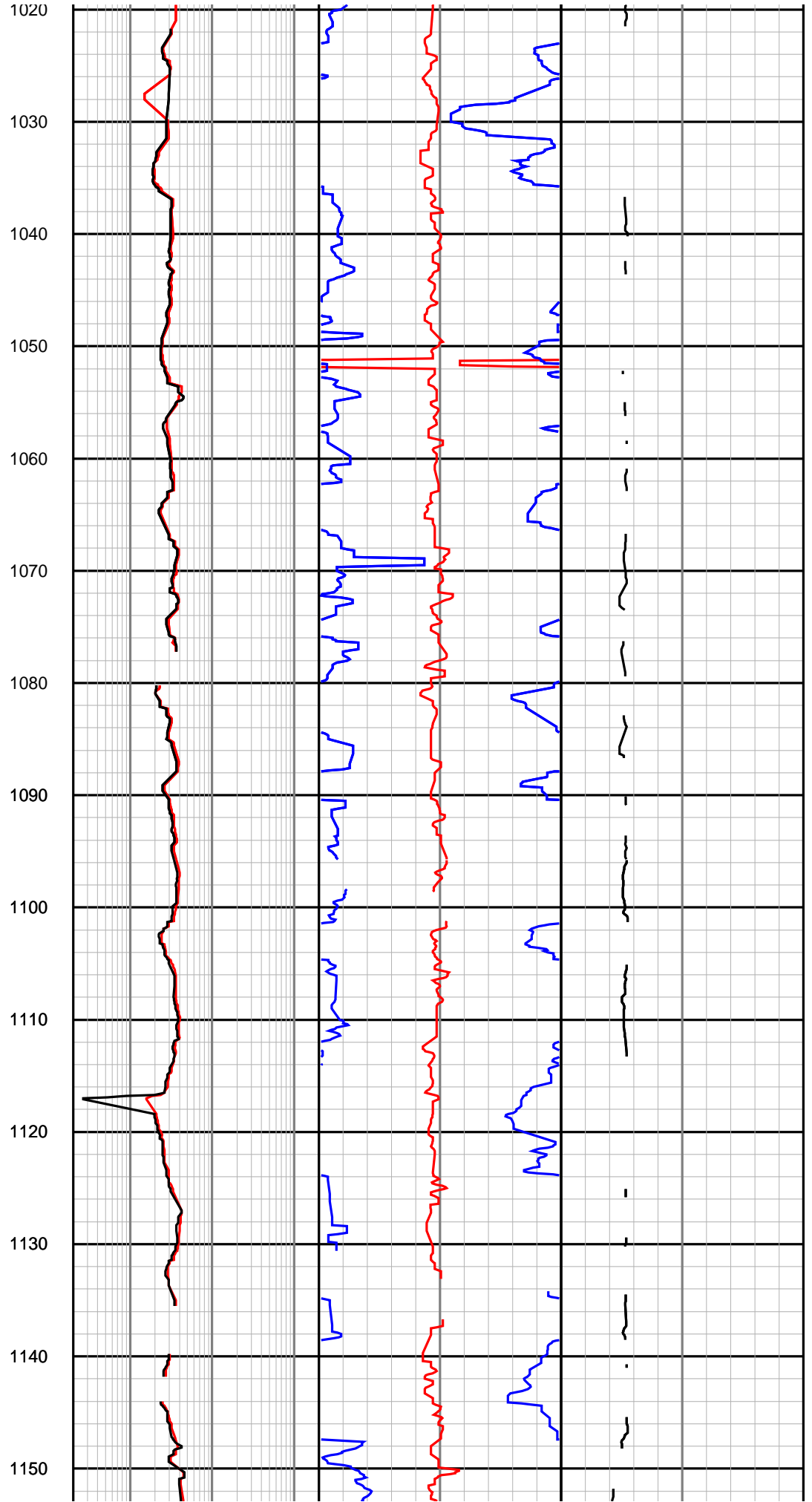
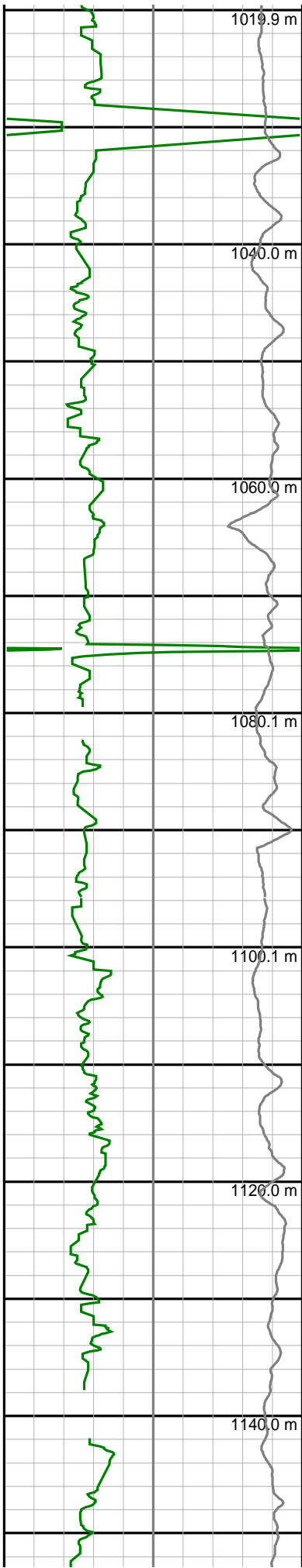
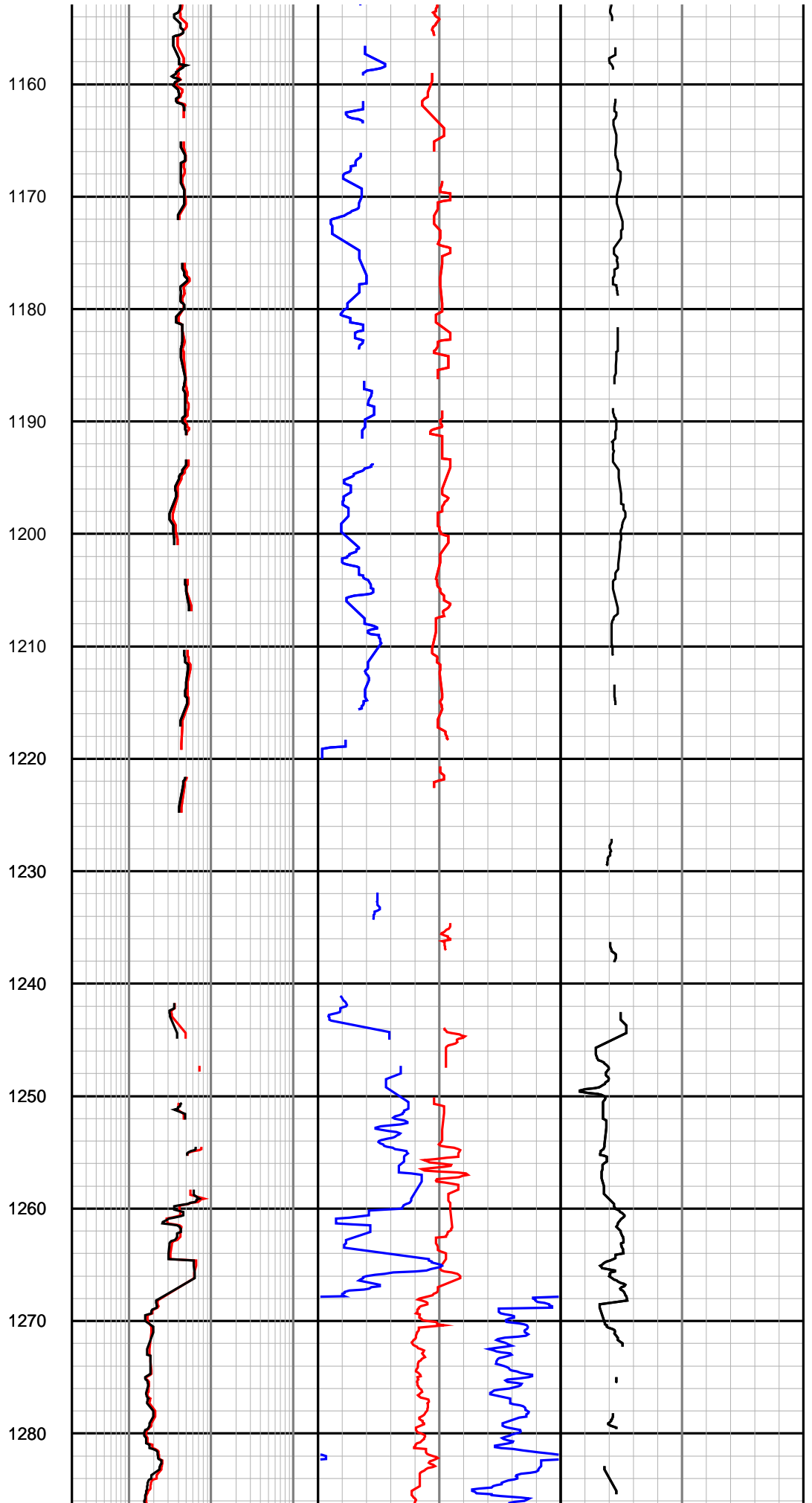
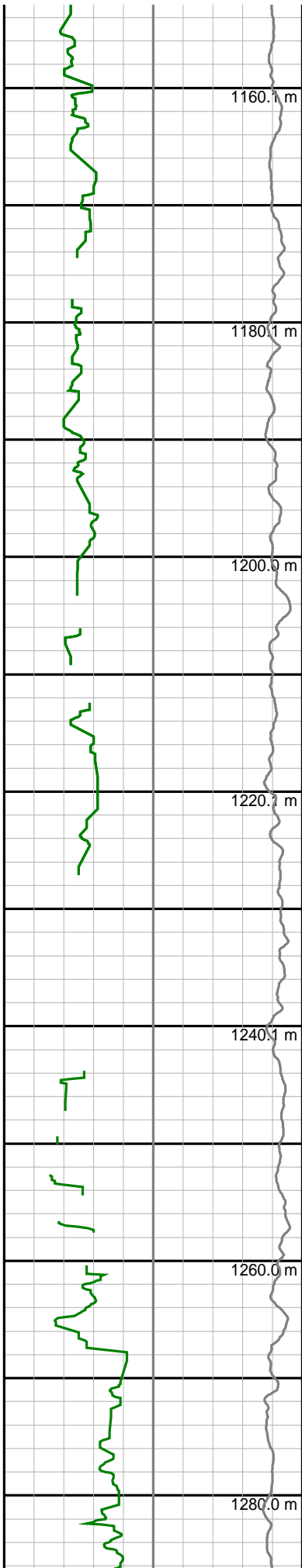


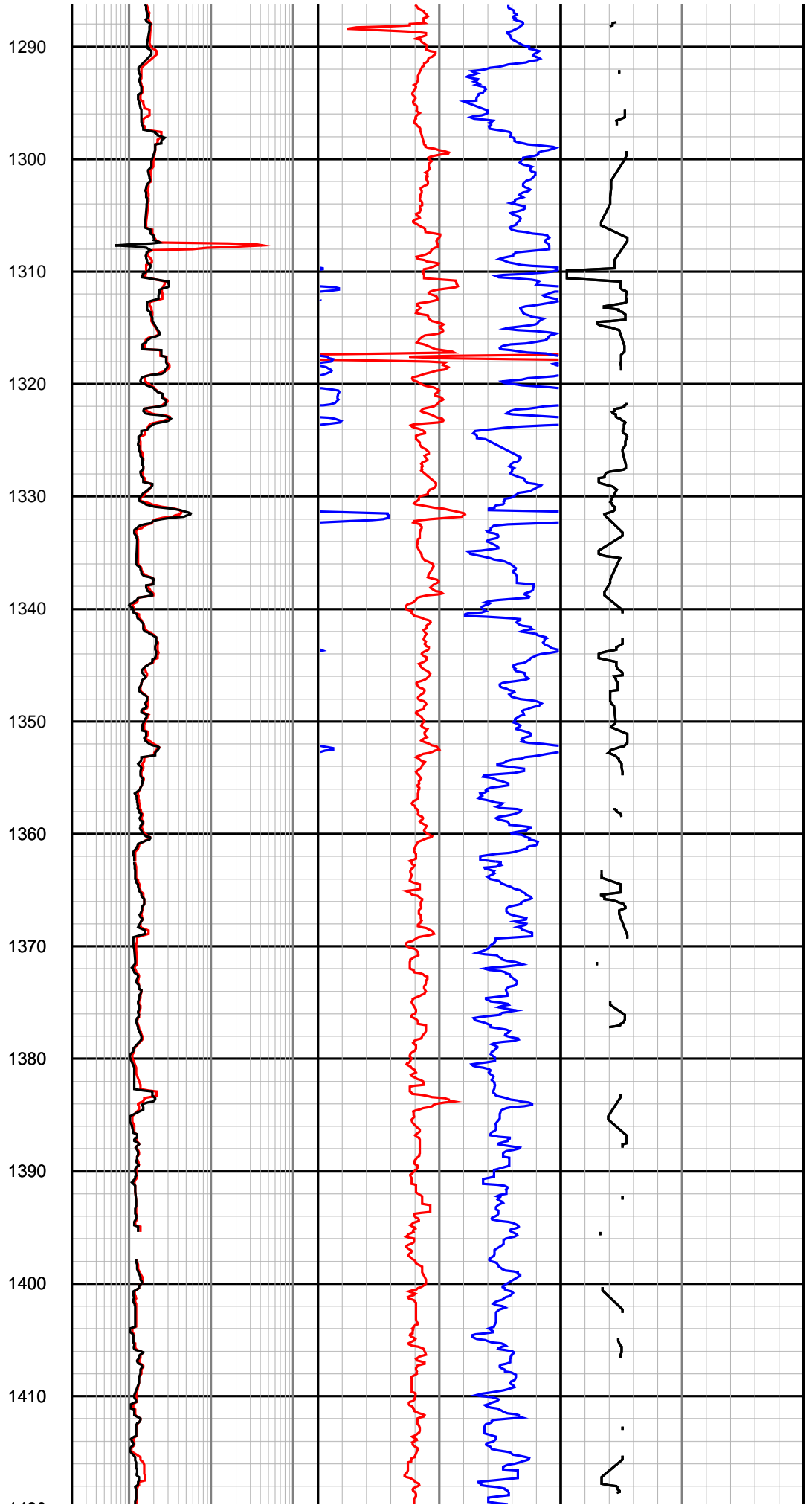
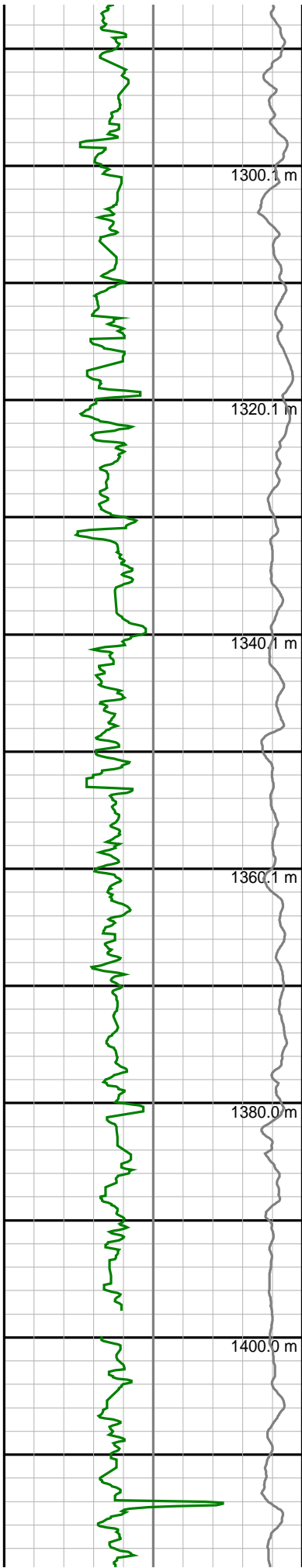
Fur Seal-1 LWD RT Log

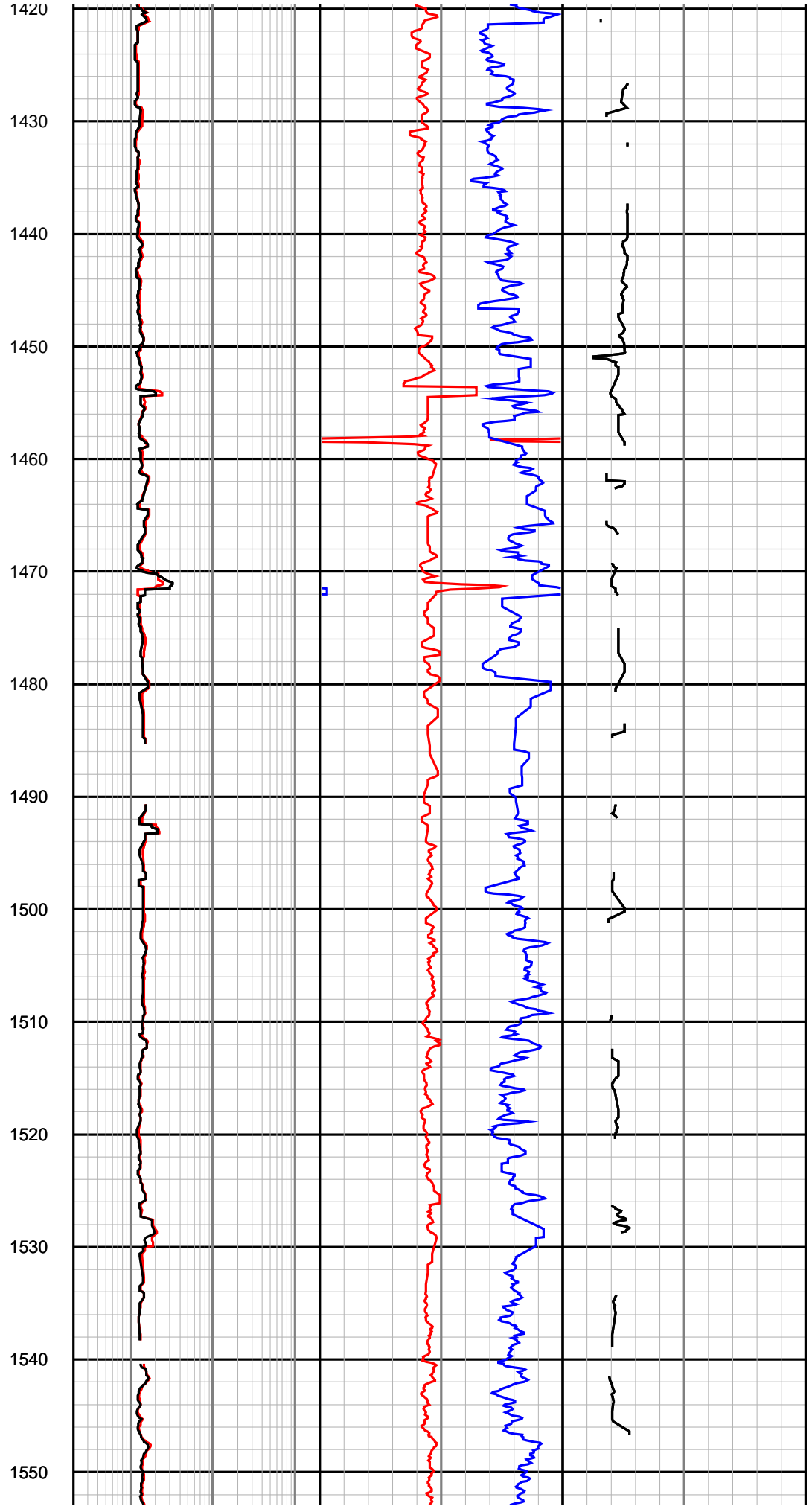
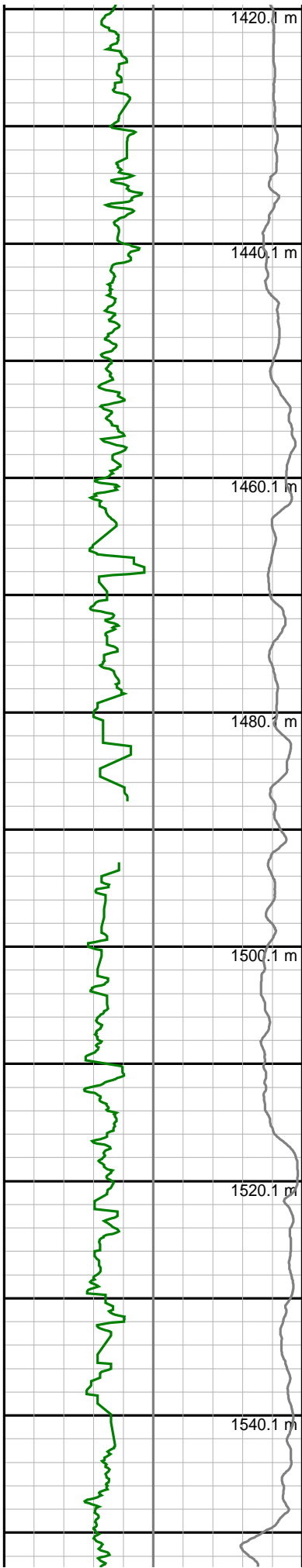


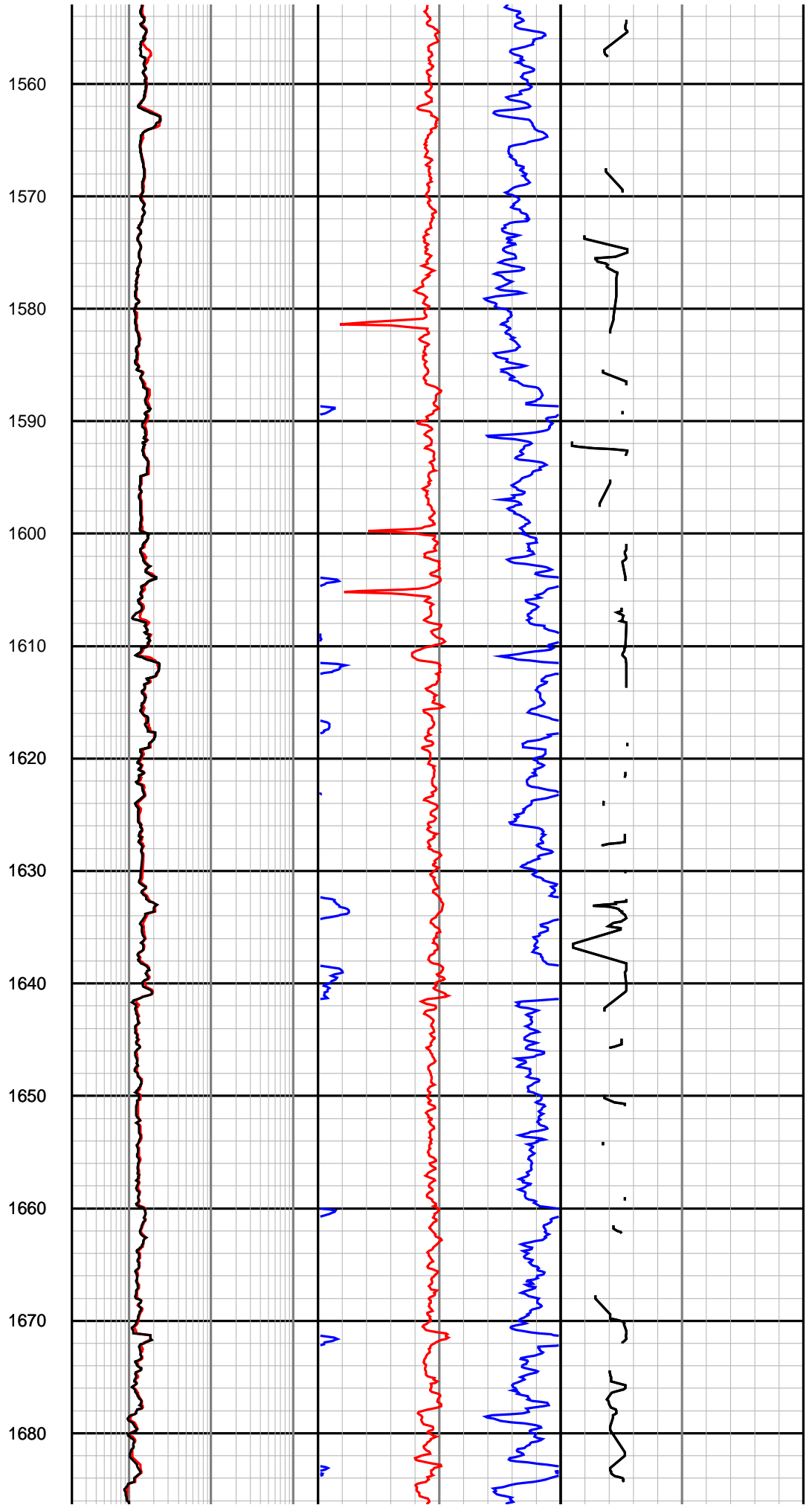
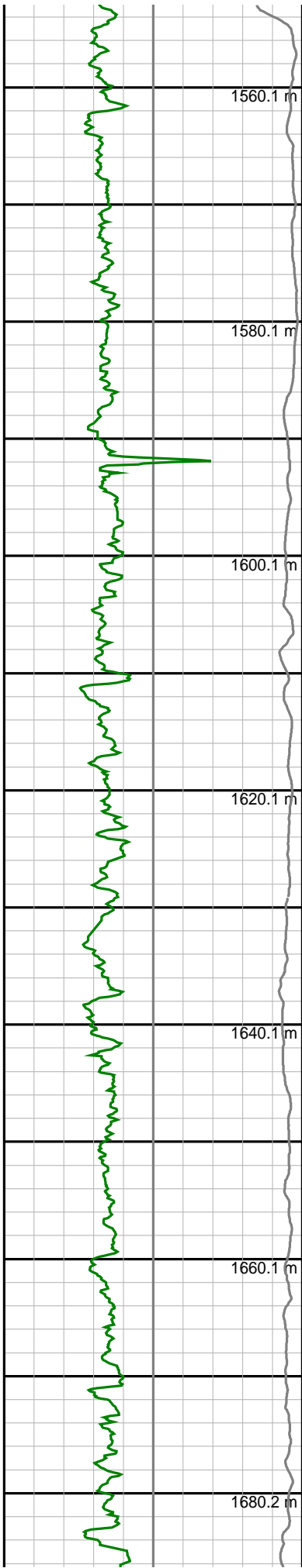


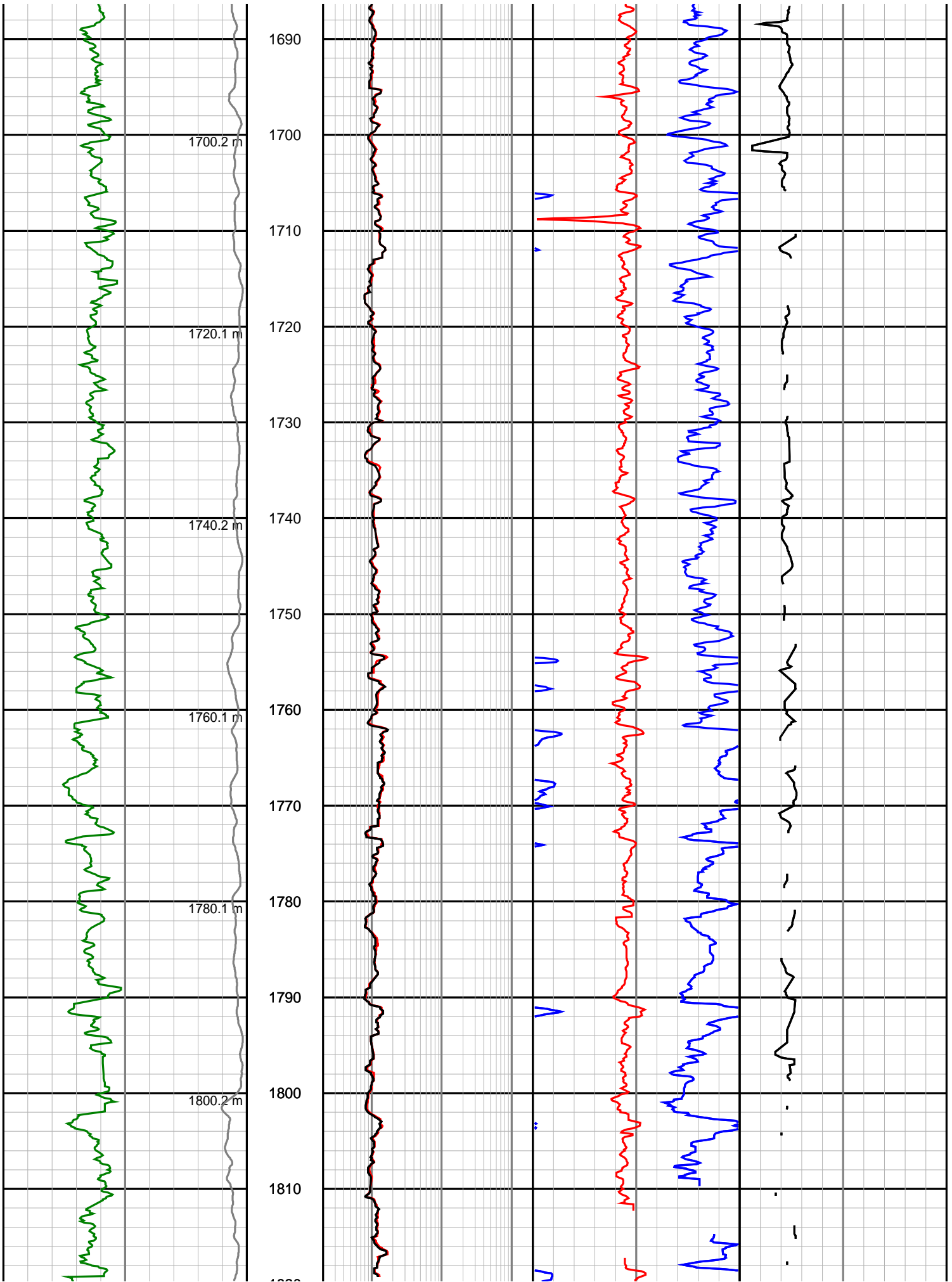


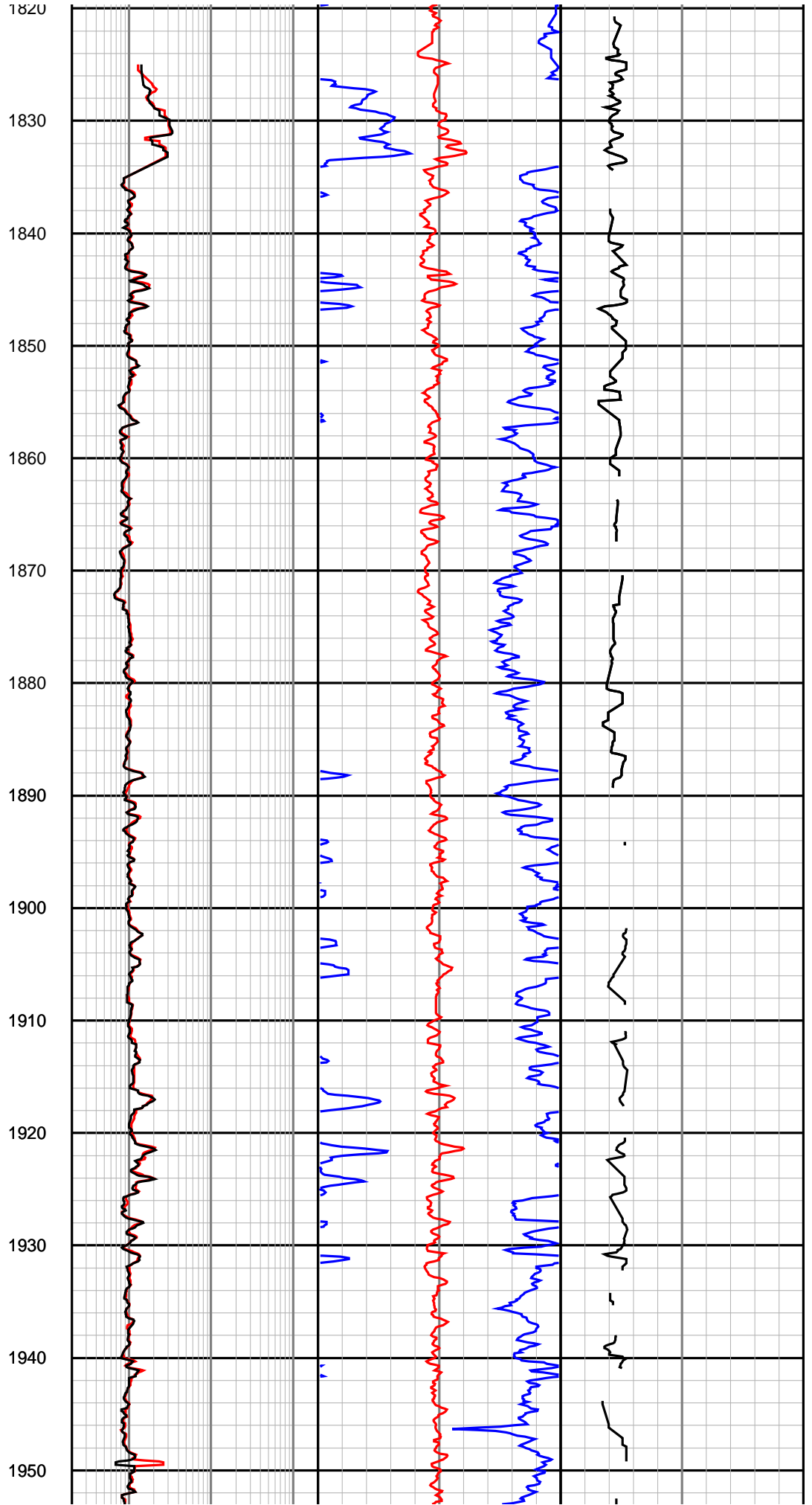
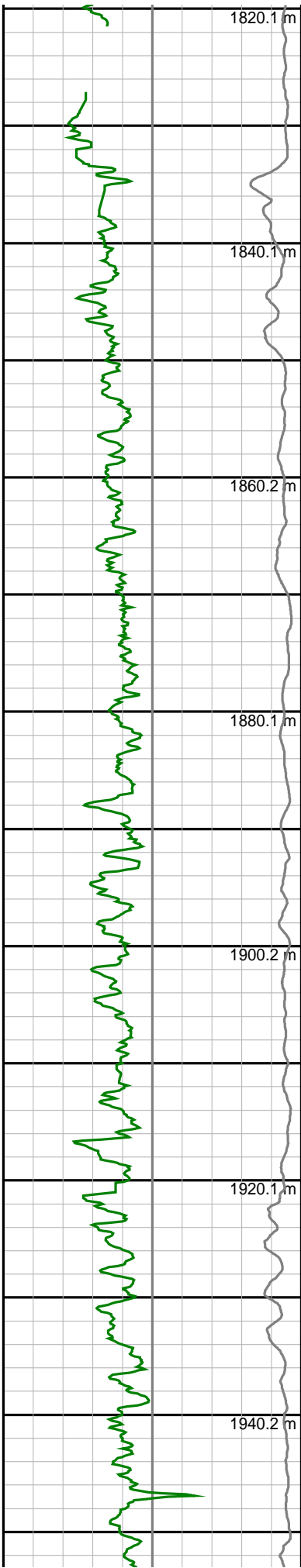


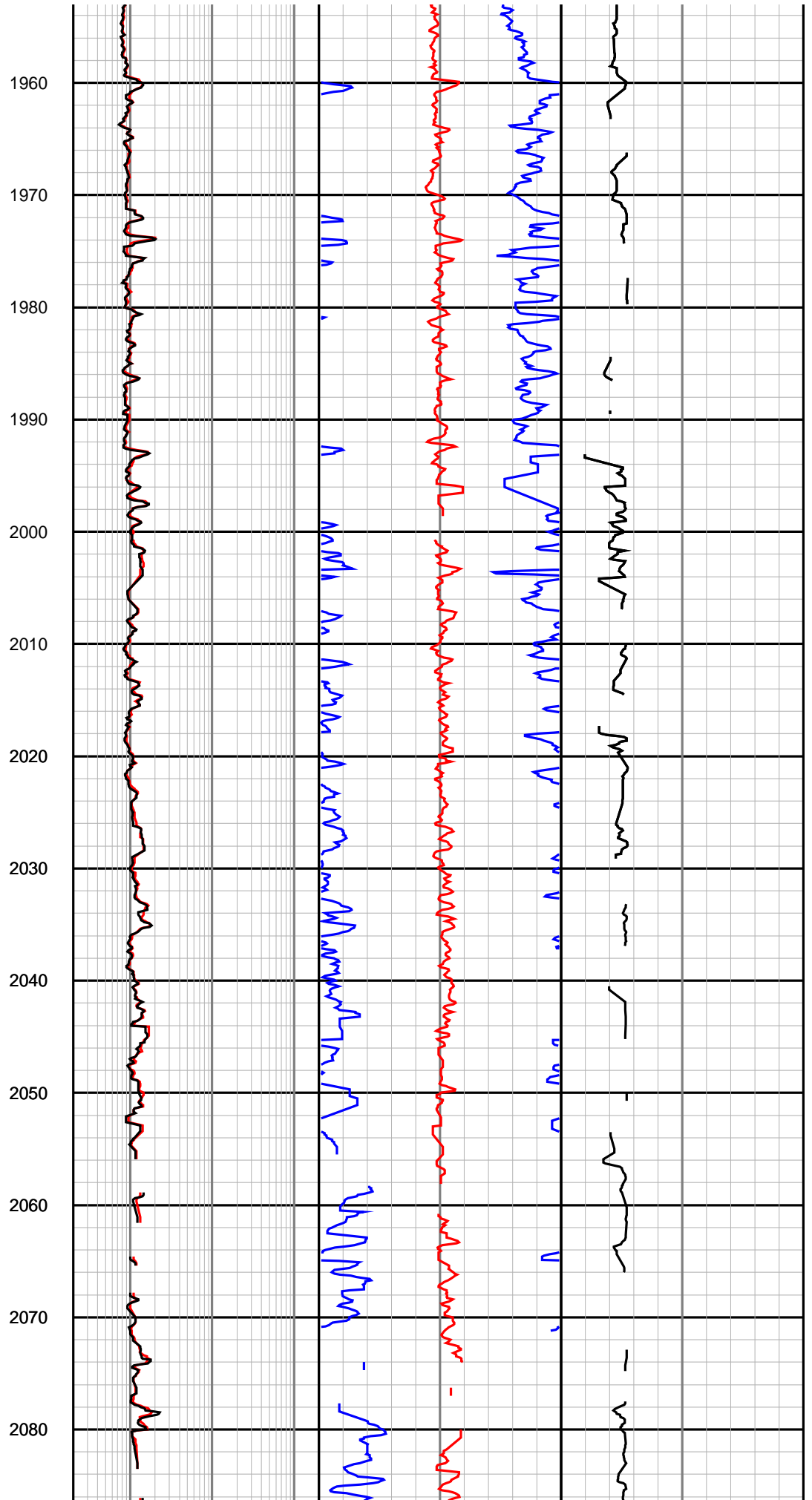
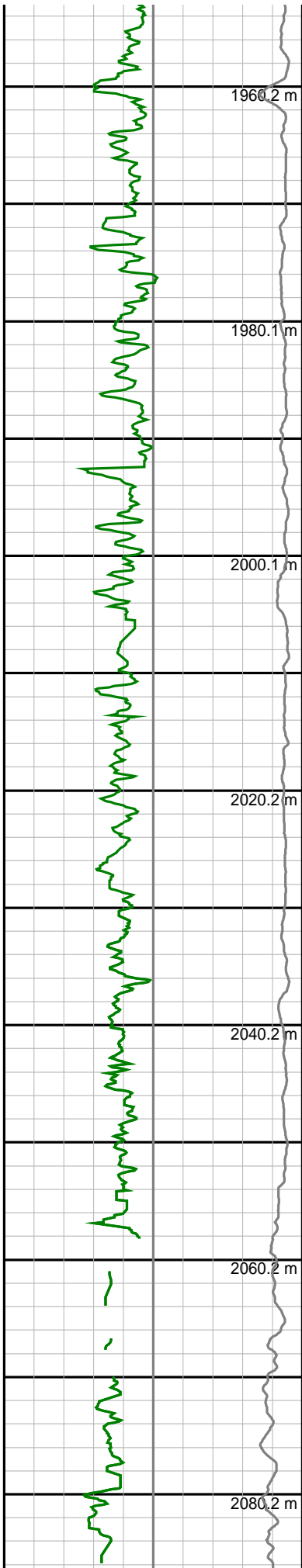


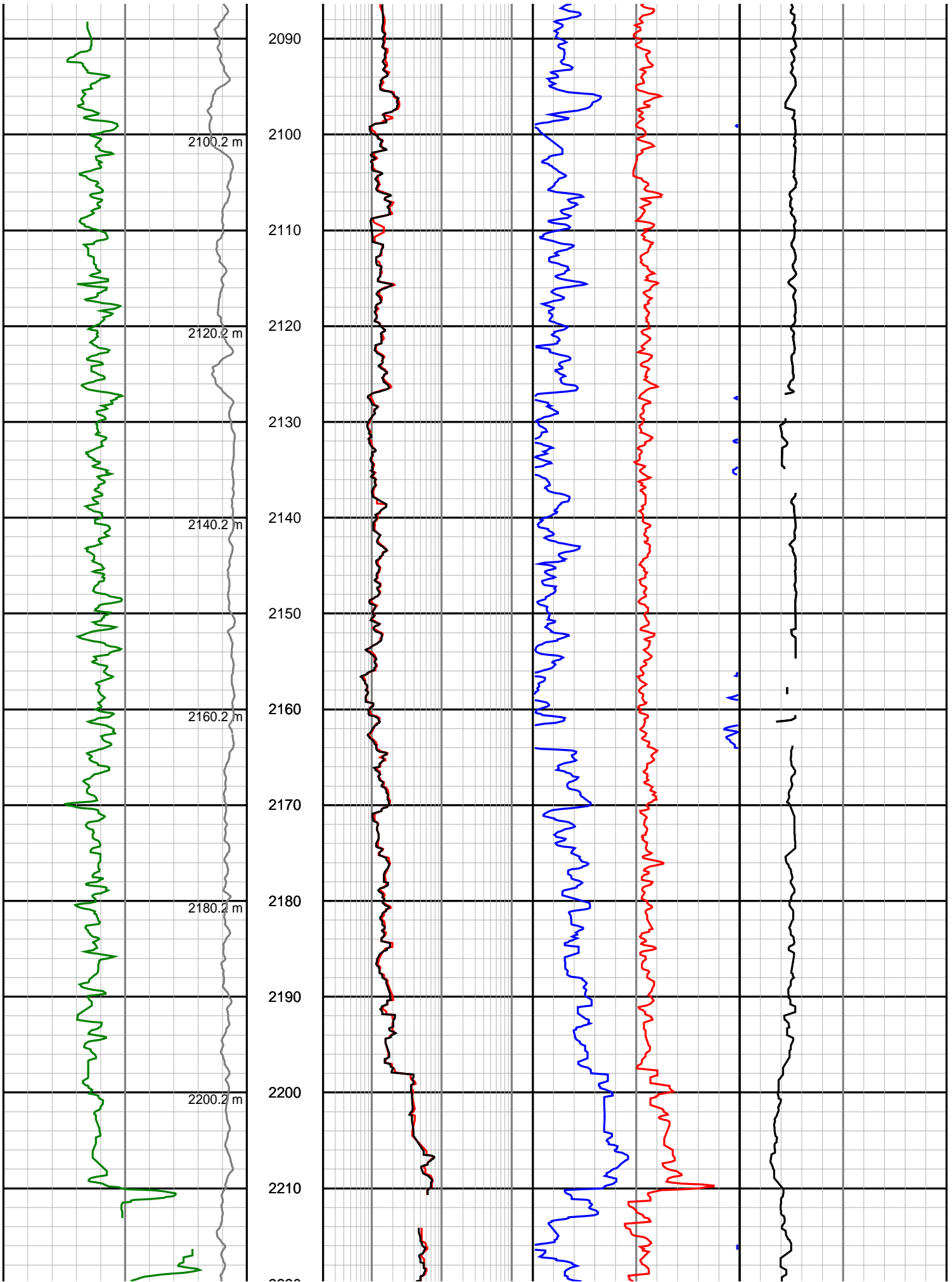


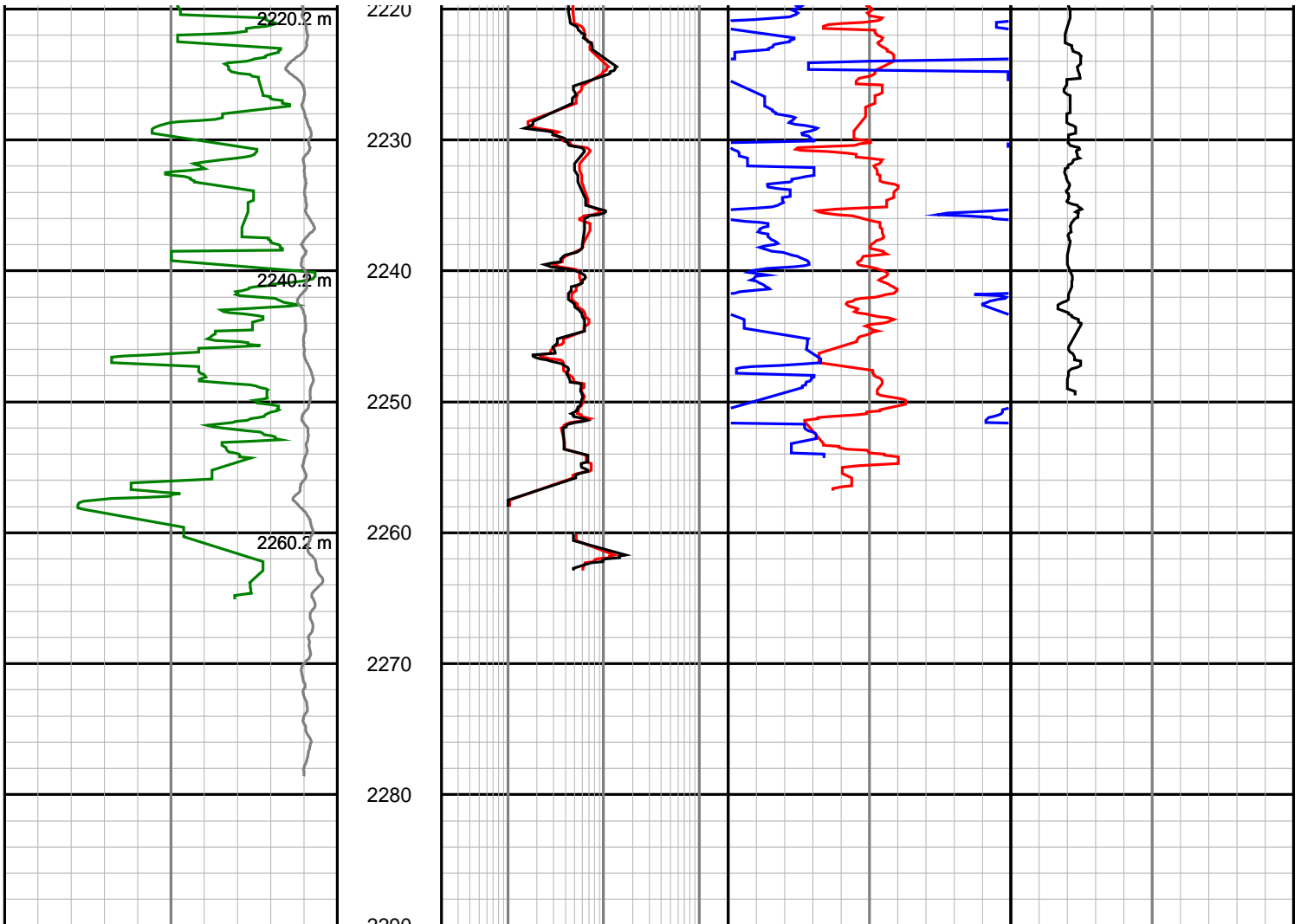












Gamma Ray (SGRC) api	Depth TVD 1:500	Ext Shallow Phase Res (SEXP) ohmm	Standoff Correction (SCO2) gram per cc	Compressional Slowness (BATC) microsec per ft
0 200		0.2 200	-0.75 0.25	40 240
Rate of Penetration (SROP) m/hr		Shallow Phase Res (SESP) ohmm	Neutron Porosity (NUCL) v/v	Photoelectric Effect (SNP2) barns/electron
500 0		0.2 200	0.45 -0.15	0 10
Acoustic Caliper (ACAL) inches		Medium Phase Res (SEMP) ohmm	Density (SBD2) gram per cc	
6 26		0.2 200	1.95 2.95	
Measured Depth metres		Deep Phase Res (SEDP) ohmm		
		0.2 200		